

GP Connect Overview

Alison Taylor
Senior Programme Manager - Nurse
NHS England Digitising Social Care

Care Show April 25



What is GP Connect?



[Accessing GP patient records for care | Digitising Social Care](#)

GP Connect is a system which shares patient information with appropriate staff, so you can deliver better care.

CQC registered care providers can use GP Connect to access a restricted view of a person's GP record.

To do so, you must have:

- a digital social care record (DSCR) solution in place from NHS England's [assured solutions list](#) which integrates with GP Connect
- reached “standards met” on the [Data Security and Protection Toolkit \(DSPT\)](#)
- [Sign the National Data Sharing Agreement \(NDSA\)](#)

Who can access for what?



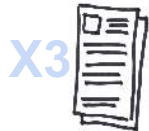
The following roles in CQC registered care providers have access via local DSCR RBAC

- CQC Registered Manager
- Deputy Home Manager/Care Manager /Deputy Care Manager/Senior Carer/Team Leader.
- Pharmacist/ Pharmacy technician;
- Nurses (can access full record if needed)
- Social worker

April 25, we have 17 solutions/16 DSCR suppliers fully assured at various stages of implementation

Access includes information on people

Encounters (last 3 from GP practice)



Active Problems/Immunisations



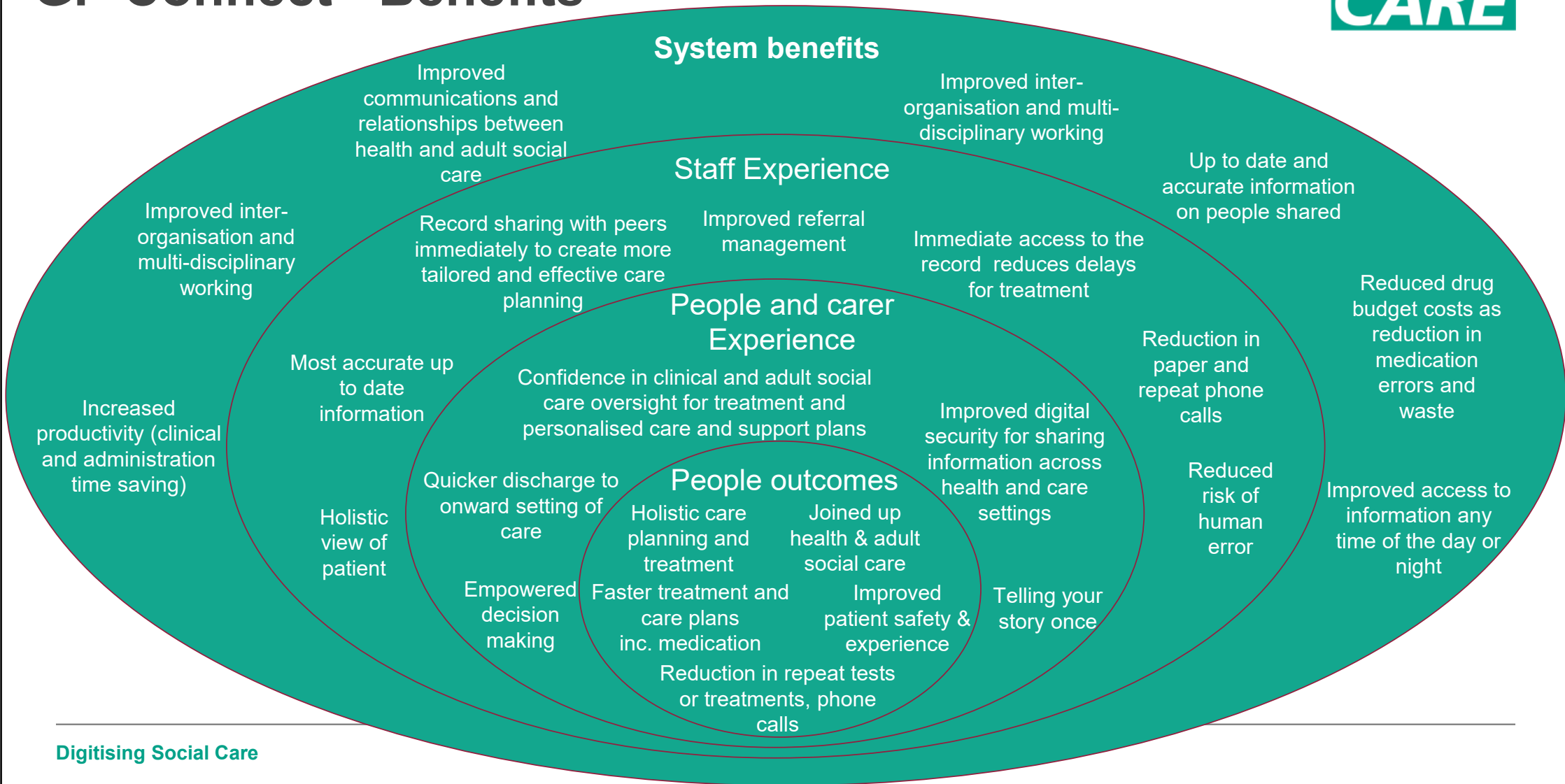
Medications



Allergies



GP Connect - Benefits



GP Connect - Care Provider Testimonials/Benefits



Huge time saving benefits for both services and GP practices.

- Not calling the GP for information - 'Time, people really don't have a lot of. And for every patient, when you add up, it's very quickly adding up, doesn't it?'

Improved quality of care.

- 'One of the other things that we didn't know was that his pacemaker has been reset in December again because of the GP Connect we were able to find that out'

Improved efficiency of service delivery.

- 'The fact that we don't have to be bothering a third party or be waiting for a third party to respond'

Improved service user satisfaction.

- 'The quickness of the information is second to none'

Improved person-centred, holistic planning.

- 'The system enables you to get the holistic picture, looking at everything'

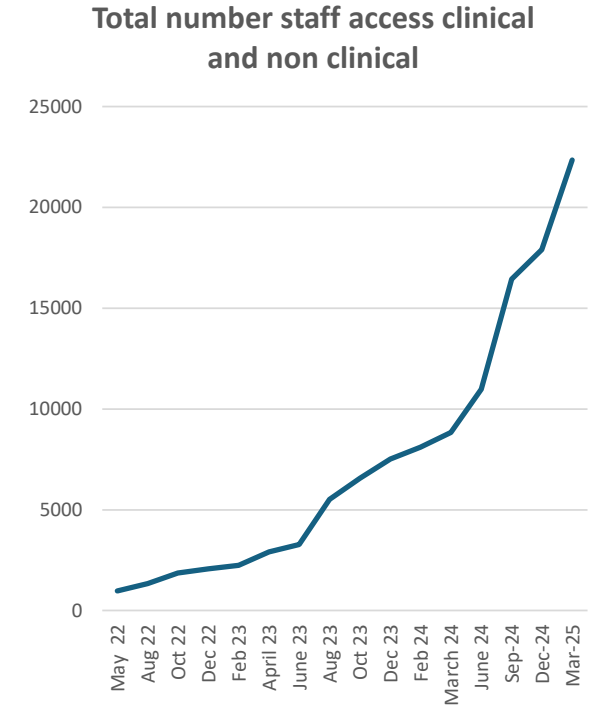
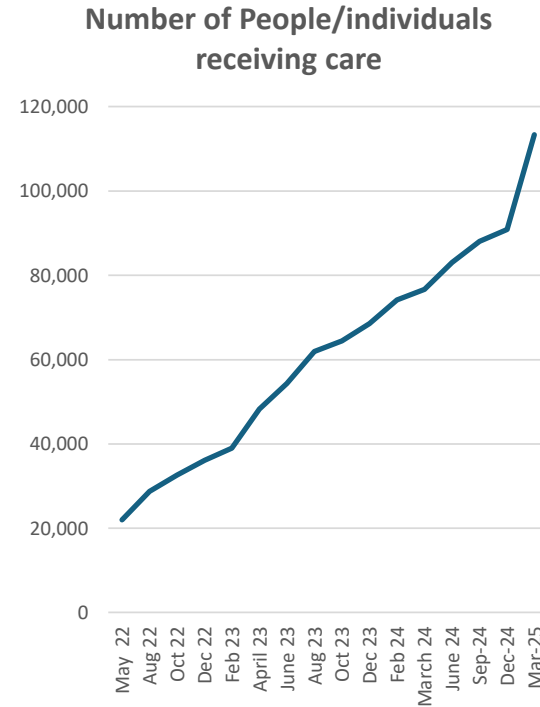
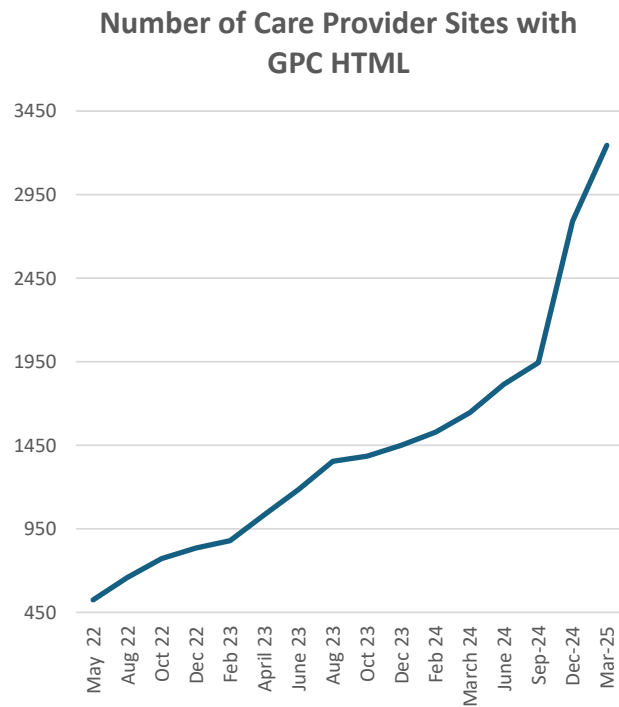
Improved timely decision making.

- 'Really big challenges with the care homes are often when somebody comes out of the hospital; you get very superficial information about their health, backgrounds and what we want. What we can do now is much clearer that individual's history. That's the best. Biggest benefit from the beginning'

Implementation Data



DSCR suppliers live (15 suppliers)	No of Care Provider Sites Live with GPC HTML	No of People/Individuals receiving care	No Staff access clinical & non-clinical
May 22 – March 25	3,245	113,313	22,337



Understand the National Data Sharing Agreement (NDSA) and activation process - get started quickly



Understand the National Data Sharing Agreement (NDSA) and activation process - get started quickly



What is the NDSA?

- A signed contract detailing acceptable use of data by GP Connect users.
- Ensures secure sharing of GP patient records between GP Connect products.

Requirements for GP Connect Access:

- Accept NDSA terms and have a current DSPT submission ('Standards Met').
- Adhere to Data Protection laws and use GP Connect only for direct care.
- Be CQC registered.

Application process:

- Provide GP Connect software name and ODS code.
- State the reason for using GP Connect and confirm NDSA agreement.
- Submit signatory details (Caldicott Guardian, SIRO, or DPO).

DSCR assured solution Role:

- Awarded Connecting Systems Assurance by NHS Digital.
- Will activate GP Connect once NDSA is signed and [ODS code](#) is provided.

Next Steps for providers:

- Visit [GP Connect Info](#) and apply through the [NHS Portal](#); contact DSCR solution for assistance with activation.

GP connect Assured DSCR solution suppliers



- Birdie
- Carebeans Care Software
- Care Control Systems
- CareLineLive
- Care Vision
- Dom Portal by Decaura
- Fusion eCare
- Log my Care
- OneTouch
- PASS by everyLIFE
- Person Centred Software (PCS)
- Nourish
- Qwikify
- Access
- Careberry
- Roundsys



**THANK YOU FOR YOUR
TIME**



QUESTIONS

The background is a solid teal color with several large, overlapping, semi-transparent circular shapes in a lighter shade of teal, creating a layered, abstract effect.

CARE